

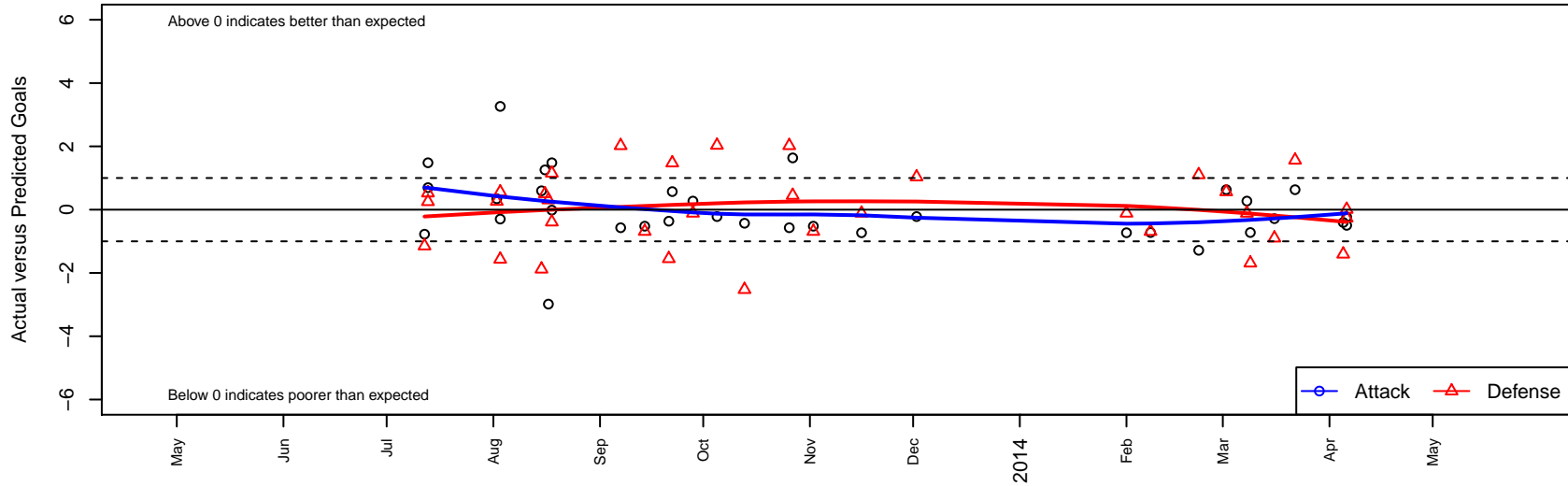
RSA Elite McQueen G02

Rainier Soccer Alliance
 Puyallup, WA
 G02 total strength=194
 attack=0.1 defense=0.15
 fall league = PSPL WSPL U11, Spr PSPL Clas:
 alt names used:
 RAINIER SOCCER ALLIANCE ELITE 02 MCQ
 RSA Elite G02-McQueen
 RSA Elite [McQueen]

Venues played:
 King of the Hill Cascade U12
 Blast Off GU11 A
 Bigfoot Silver U11
 PSPL WSPL U11
 Spr PSPL Classic 1 U11
 WA Cup GU12 Bronze U12



RSA Elite McQueen G02
 Dots are actual minus expected GF (blue circles) and GA (red triangles).
 Blue line is smoothed change in attack strength. Red is smoothed change in defense strength.



| | date | home | | away | | venue | pred.home | pred.away |
|------|-------------|-----------------------------------|---|--------------------------------|---|------------------------|------------------|------------------|
| 7643 | 2014-04-06 | Emerald City FC Green G01 | 3 | RSA Elite McQueen G02 | 0 | WA Cup GU12 Bronze U12 | 2.73 | 0.49 |
| 7644 | 2014-04-06 | RSA Elite McQueen G02 | 0 | Orting FC Pumas G01 | 2 | WA Cup GU12 Bronze U12 | 0.23 | 2.01 |
| 7606 | 2014-04-05 | NORTAC Comets G01 | 5 | RSA Elite McQueen G02 | 0 | WA Cup GU12 Bronze U12 | 3.59 | 0.40 |
| 3547 | 2014-03-22 | Wenatchee Fire Black Lopez G02 | 0 | RSA Elite McQueen G02 | 2 | Spr PSPL Classic 1 U11 | 1.56 | 1.37 |
| 3509 | 2014-03-16 | MRFC Blue G02 | 2 | RSA Elite McQueen G02 | 1 | Spr PSPL Classic 1 U11 | 1.10 | 1.28 |
| 3417 | 2014-03-09 | ISC Gunners B G02 | 3 | RSA Elite McQueen G02 | 0 | Spr PSPL Classic 1 U11 | 1.31 | 0.72 |
| 3383 | 2014-03-08 | RSA Elite McQueen G02 | 1 | Cascade FC G02 | 1 | Spr PSPL Classic 1 U11 | 0.73 | 0.89 |
| 3332 | 2014-03-02 | RSA Elite McQueen G02 | 2 | Wenatchee Fire Black Lopez G02 | 1 | Spr PSPL Classic 1 U11 | 1.37 | 1.56 |
| 3214 | 2014-02-22 | RSA Elite McQueen G02 | 0 | MRFC Blue G02 | 0 | Spr PSPL Classic 1 U11 | 1.28 | 1.10 |
| 3154 | 2014-02-08 | RSA Elite McQueen G02 | 0 | ISC Gunners B G02 | 2 | Spr PSPL Classic 1 U11 | 0.72 | 1.31 |
| 3127 | 2014-02-01 | Cascade FC G02 | 1 | RSA Elite McQueen G02 | 0 | Spr PSPL Classic 1 U11 | 0.89 | 0.73 |
| 3005 | 2013-12-02 | RSA Elite McQueen G02 | 0 | ISC Gunners A G02 | 2 | PSPL WSPL U11 | 0.22 | 3.03 |
| 2807 | 2013-11-16 | Cascade FC G02 | 1 | RSA Elite McQueen G02 | 0 | PSPL WSPL U11 | 0.89 | 0.73 |
| 2569 | 2013-11-02 | RSA Elite McQueen G02 | 0 | MVP Marauders Navy G02 | 2 | PSPL WSPL U11 | 0.52 | 1.31 |
| 2488 | 2013-10-27 | RSA Elite McQueen G02 | 2 | Spokane Foxes Red G02 | 4 | PSPL WSPL U11 | 0.36 | 4.45 |
| 2424 | 2013-10-26 | RSA Elite McQueen G02 | 0 | NW United Powell G02 | 1 | PSPL WSPL U11 | 0.57 | 3.02 |
| 2194 | 2013-10-13 | RSA Elite McQueen G02 | 0 | ASE Emerald G02 | 6 | PSPL WSPL U11 | 0.43 | 3.48 |
| 1939 | 2013-10-05 | ISC Gunners A G02 | 1 | RSA Elite McQueen G02 | 0 | PSPL WSPL U11 | 3.03 | 0.22 |
| 1764 | 2013-09-28 | RSA Elite McQueen G02 | 1 | Cascade FC G02 | 1 | PSPL WSPL U11 | 0.73 | 0.89 |
| 1677 | 2013-09-22 | ASE Emerald G02 | 2 | RSA Elite McQueen G02 | 1 | PSPL WSPL U11 | 3.48 | 0.43 |
| 1620 | 2013-09-21 | Spokane Foxes Red G02 | 6 | RSA Elite McQueen G02 | 0 | PSPL WSPL U11 | 4.45 | 0.36 |
| 1456 | 2013-09-14 | MVP Marauders Navy G02 | 2 | RSA Elite McQueen G02 | 0 | PSPL WSPL U11 | 1.31 | 0.52 |
| 1287 | 2013-09-07 | NW United Powell G02 | 1 | RSA Elite McQueen G02 | 0 | PSPL WSPL U11 | 3.02 | 0.57 |
| 988 | 2013-08-18 | Seattle United Shoreline Blue G02 | 0 | RSA Elite McQueen G02 | 1 | Bigfoot Silver U11 | 1.15 | 1.01 |
| 989 | 2013-08-18 | Seattle United Copa G04 | 2 | RSA Elite McQueen G02 | 3 | Bigfoot Silver U11 | 1.61 | 1.52 |
| 923 | 2013-08-17 | SCORE Patriots Blue G02 | 0 | RSA Elite McQueen G02 | 2 | Bigfoot Silver U11 | 0.31 | 4.98 |
| 882 | 2013-08-16 | Seattle United Tango G03 | 0 | RSA Elite McQueen G02 | 3 | Bigfoot Silver U11 | 0.50 | 1.74 |
| 867 | 2013-08-15 | Snohomish United Black G03 | 3 | RSA Elite McQueen G02 | 4 | Bigfoot Silver U11 | 1.12 | 3.40 |

| | date | home | | away | | venue | pred.home | pred.away |
|------|-------------|-------------------------|---|--------------------------|---|------------------------------|------------------|------------------|
| 629 | 2013-08-03 | Blackhills FC Black G02 | 4 | RSA Elite McQueen G02 | 4 | Blast Off GU11 A | 2.43 | 0.74 |
| 631 | 2013-08-03 | RSA Elite McQueen G02 | 1 | PS Slammers Black G02 | 0 | Blast Off GU11 A | 1.30 | 0.56 |
| 599 | 2013-08-02 | FWFC Blue G02 | 2 | RSA Elite McQueen G02 | 1 | Blast Off GU11 A | 2.26 | 0.65 |
| 4160 | 2013-07-13 | RSA Elite McQueen G02 | 4 | RSA Elite Miller G02 | 0 | King of the Hill Cascade U12 | 2.52 | 0.53 |
| 4162 | 2013-07-13 | RSA Elite McQueen G02 | 1 | Seattle Celtic Green G01 | 3 | King of the Hill Cascade U12 | 0.30 | 3.25 |
| 4124 | 2013-07-12 | UPSC Blue Starz G01 | 3 | RSA Elite McQueen G02 | 0 | King of the Hill Cascade U12 | 1.85 | 0.78 |